

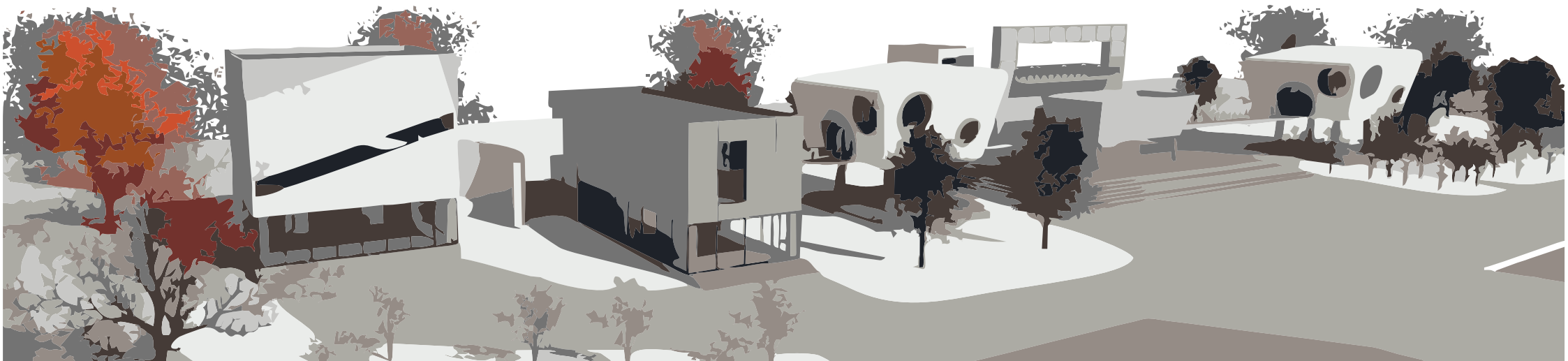
B R O A D
B A S E D
D E S I G N

Architectur e

www.broadbaseddesign.com

About us

We are a team of young professionals who are ambitious and determined to make their mark in the design industry and built environment. We gained experience working across the industry on different project from residential to commercial. Exposed to sustainability design, architectural design, urban design and project management we combine our skills to make sure we put our best foot forward in whatever project we are put on.





Mlondolozzi Hempe

Director

BAS | Architectural Designer |
Green Building Consultant

Mlondolozzi is a co-founder of Broad Based Design and is instrumental in the design direction of the company. He has a multi dimensional design background working in the disciplines of architecture, sustainable design consulting, furniture design and exhibition curator.

This gives him a unique advantage in understanding design. In 2017 he presented his paper "Integrated living in a post apartheid state" at the World architects congress in Seoul South Korea. As a sustainable design consultant and also Director at PJC+Partners he has worked on Awards winning developments around the country, 140 West in Sandton, Sable Park in Century City and the two New Universities in Kimberley and Nelspruit to name a few.

He has exhibited his furniture and curated art exhibitions internationally and locally under his design company Umongo. He now sits on the editorial advisory board of Earthworks magazine one of South Africa biggest content producers in the building industry. Hempe has also been invited to be a Jury member on multiple international design awards, Dezeen Awards, World Interior News Awards, Female Frontier Design Awards, Saint Gobain Student Contest Architecture Awards and the re-thinking Architecture Design Awards. This speaks to his insight on design theory and philosophy as a design lead.



Mfundo Magongo

Director

BAS | M.Arch | Architect

Mfundo Magongo is a curious individual, based in Johannesburg, he completed his Masters in Architecture at the University of Johannesburg. Since his studies, he has built an understanding of the importance of art as a tool for dialogue is something that goes beyond aesthetics.

He has worked in the industry on a variety of shopping center developments - Palms Springs, Design Quarter and Circus Triangle in Johannesburg. He has additionally gained experience in residential and commercial projects as well.

As a Director at Broad Based Design he works on developing the companies design language and expertise in retail developments. He is enthusiastic about his development in general, currently co-working on a children's book and developing his passion for photography.



Zuko Ngcizela

Director

BAS | Architectural Designer

Zuko Ngcizela has gained experience in the industry working on residential developments of different scales.

Passionate about the creative industry, he co-founded Broad Based Design where he has since had the opportunity to work on health care, commercial and more complex residential. At BBD he has been instrumental at progressing the companies technical abilities through R&D of BIM software.

Zuko also runs a media company, Only by Audacity (OBA), which he founded in the efforts of creating an alternative entertainment medium and a bridge for the youth of the Eastern Cape to break into Media and Broadcasting, and as a platform to educate the masses about design.



Lynette Thabo

Associate

Btech: Arch | BTech: Project Management
Masters in Urban Design

Lynette is a young designer, professionally a Senior Architectural Technologist who studied at Cape Peninsula University of Technology. She further worked in industry post her graduation, then fulfilled a journey in academia as a Junior Architectural Lecturer at Cape Peninsula University of Technology. Lynette has a passion for changing the perception of informality within the urban context.

And she believes in bringing change to how urban sprawls break-out could be avoided in future, this is aimed at finding ways of executing better living conditions in the cities to avoid urban poor. To pursue this narrative further Lynne has obtained her Master in Urban Design at Wits University.

She shares part of this process through her art collection called "in between the lines", that aims to evoke a conversation through the greater masses from different places around South Africa and the world in a greater context about urban space planning.



Andrew Melusi Mboyi

Associate

BAS | M.Arch | Architect

Andrew Melusi Nkosizile Mboyi is a multi-disciplinary award winning designer and 3D specialist. After completing his Masters in Architectural studies, he took to competitions to explore the many ideas he had for many fields in design.

Having worked as an architect and later architectural media specialist working on luxury projects spanning between residential and Commercial hospitality, Andrew saw it fit to spearhead black owned architectural software tech and media company, titled; Sthunzi Light.

This entity focuses on high-tech high-end architectural presentation media. As part of his endeavor to build himself Andrew has also taken part in a State of Art academy Masterclass on 3D visuals which was held in Venice Italy in 2018.

Joining Broad Based Design is part of a greater vision of creating a Design Hub where the ideas and executions by designers of all color and creed, may be heard, explored, exhausted and ultimately realized to their fullest potential.

Design

PhiLOsophy

BBD IS AN IDEAS COMPANY

CONNECTING IDEAS TO
PEOPLE THROUGH HUMANE
ARCHITECTURAL SOLUTIONS

CREATIVITY

CULTURE

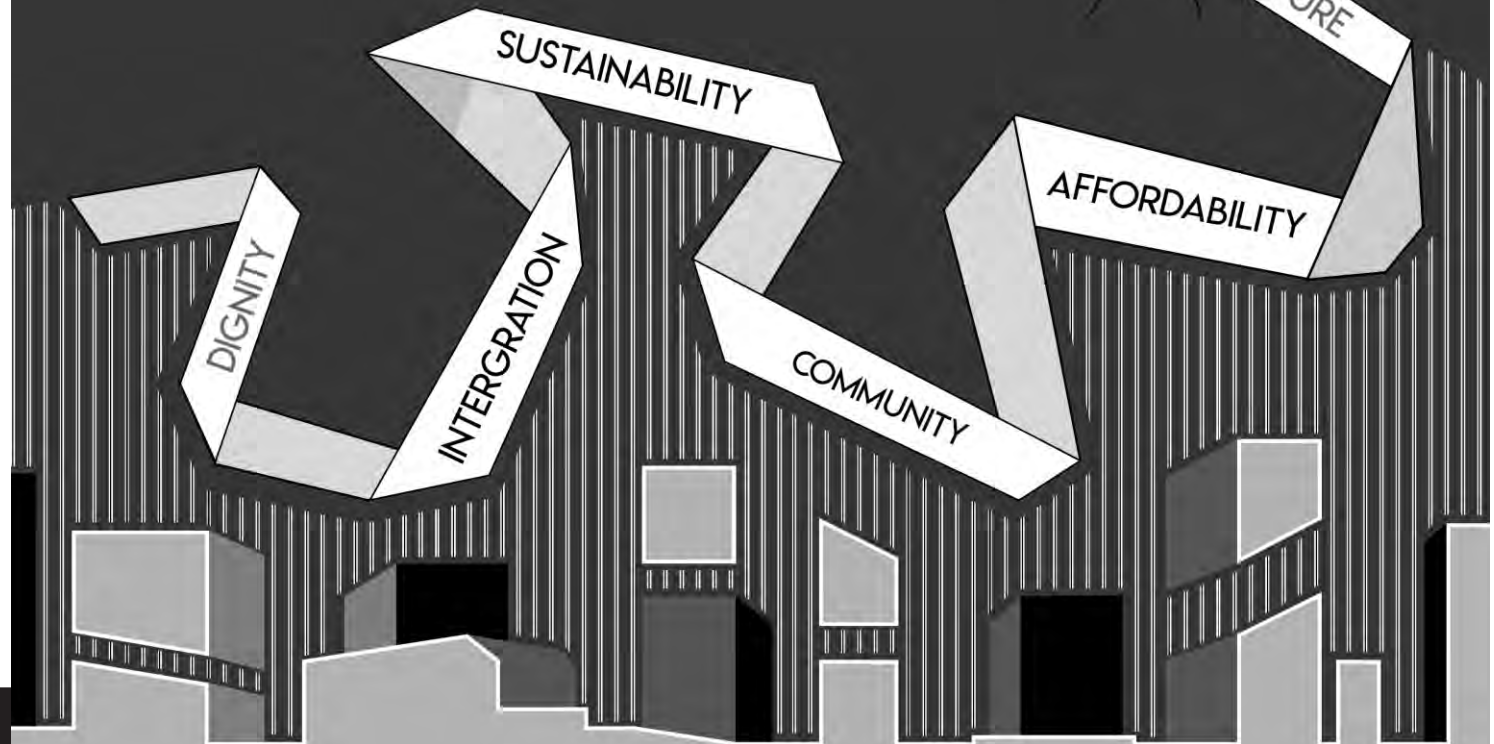
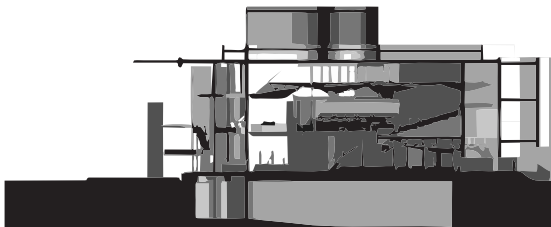
SUSTAINABILITY

AFFORDABILITY

DIGNITY

INTERGRATION

COMMUNITY



Services Offered

Project liaison

Site Analysis

Establishing client's requirements and formulating a detailed brief

Pre-design, facilitating discovery phase

Establishing sanctuary requirements pertaining to the site and brief

Concept development

Model building

3D visualization

Promotional presentation material

Sketch planning

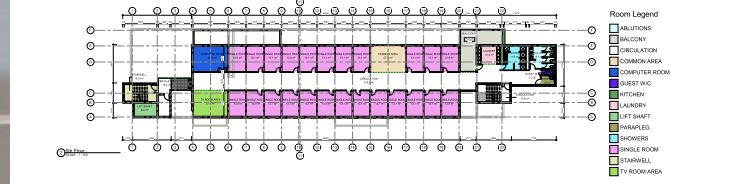
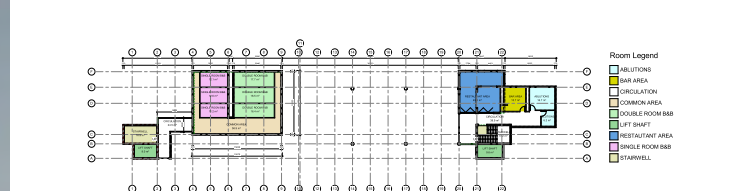
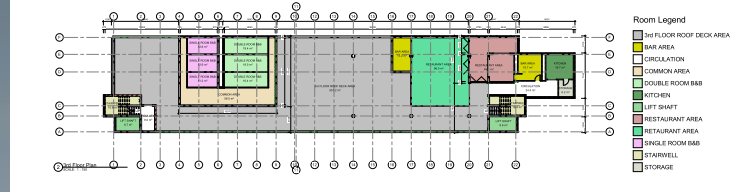
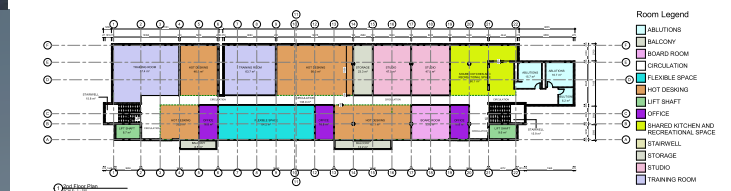
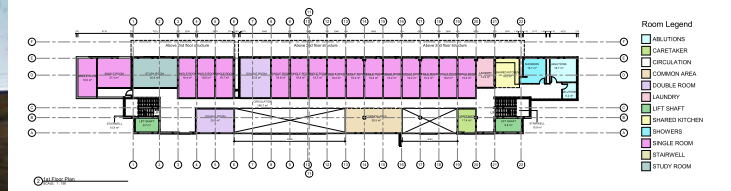
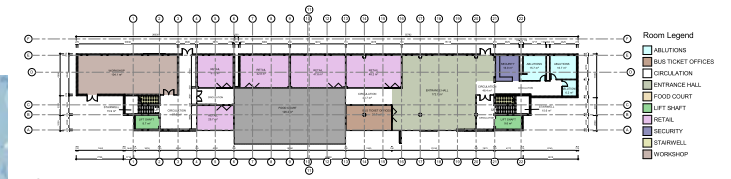
Cost estimates

Working drawings for submission to local authority

Detailed drawings, specifications and other technical documentation necessary for the construction of the building

Lathitha Building - Mixed use

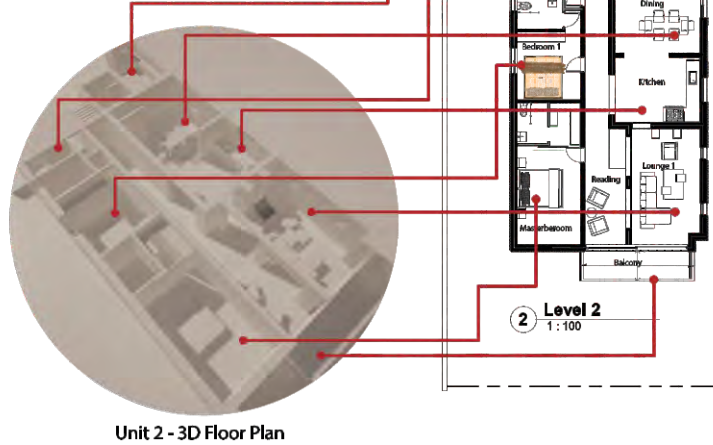
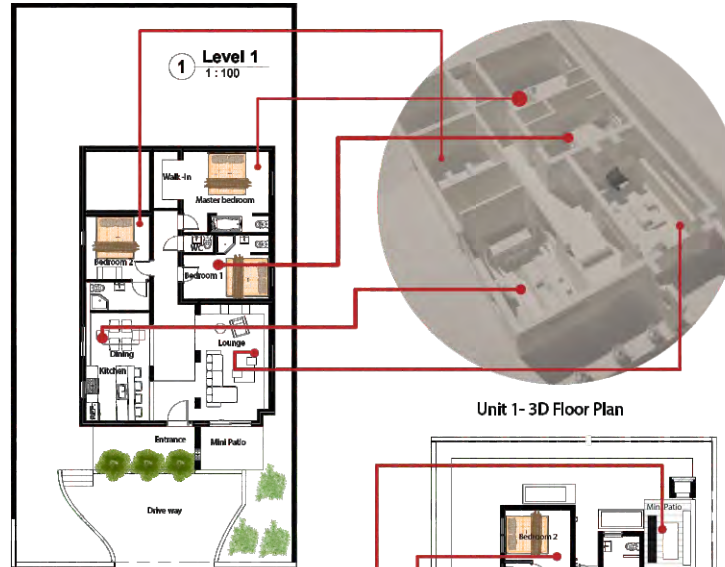
Broad Based Design proposed this building renovation as part of Tender submission to PRASA. They proposed a mixed use building in the center of Port Elizabeth. The building consists of retail space, co-working spaces, a hostel, bar and student accommodation. The idea is to use this building as a trigger to develop the Port Elizabeth inner city and inject new life and development. BBD won this tender for their client.



Green Point - Renovation - Air- BnB units

The client came to us with a unique challenge of wanting to split their existing double storey house into two separate units that can be rented out for the Cape Town - Air BnB market. We gave two options in terms of a facade facelift a modern trendy facade with a wrap around balcony y and wooden slats at th bottom for ceremonial entrance to the front unit. We also offered a second option that budget friendly but in keeping with modern features. We proposed wrapping the top half of the house with wooden slats to create separation and give an updated look.

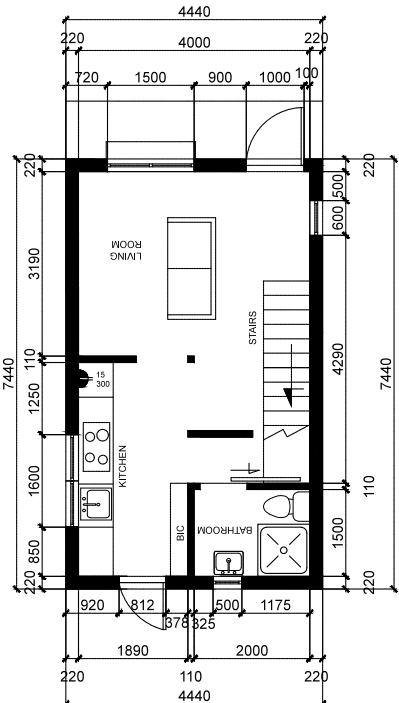
We gave an update to the back of the house to emphasize entrance for the second unit and external patio for the braai and lounge.



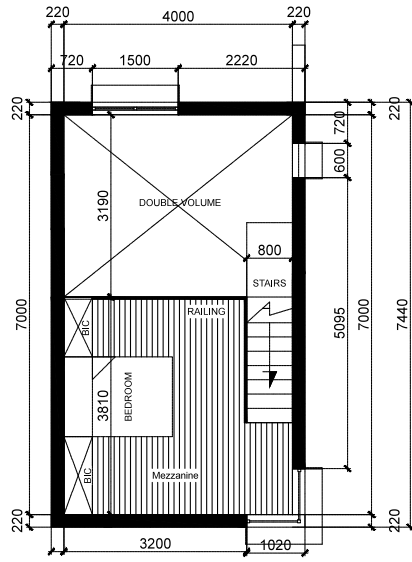
Central Port Elizabeth

The client wanted to develop 3 units on site for rental purposes. Broad Based Design was tasked to come up with a scheme that is easy to construct and maintain.

We came with these loft style apartments using grey stock brick and kilp lock roof sheeting as a feature. Windows are placed strategically to allow maximum day daylight. This was a very simple functional structure which is also aesthetically pleasing



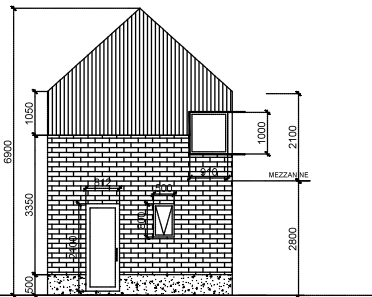
GROUND FLOOR PLAN



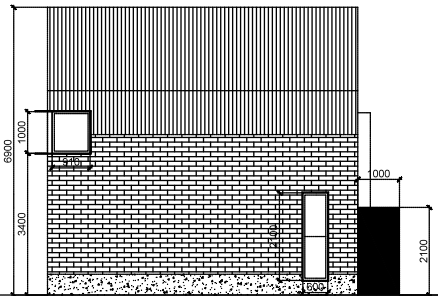
MEZZANINE PLAN



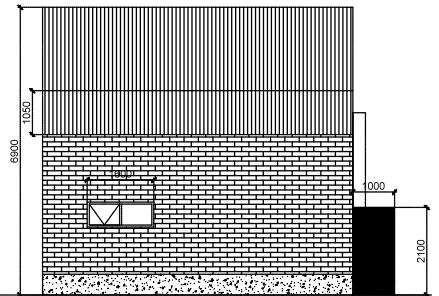
NORTH ELEVATION



SOUTH ELEVATION



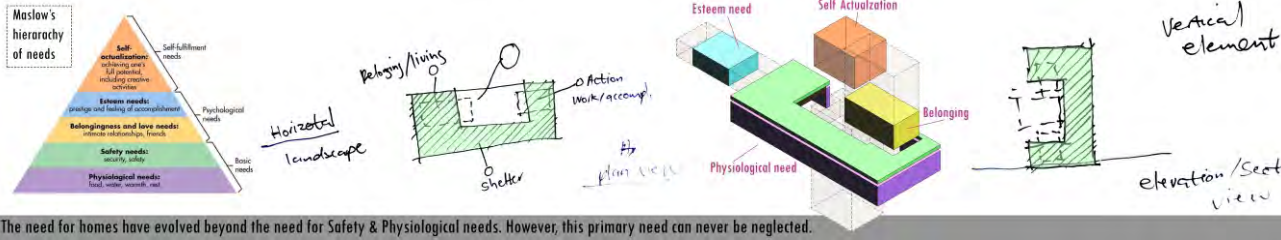
EAST ELEVATION



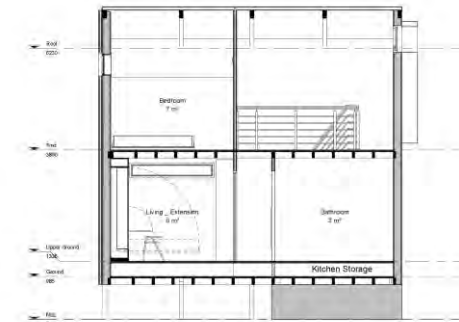
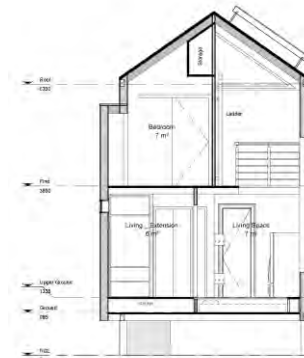
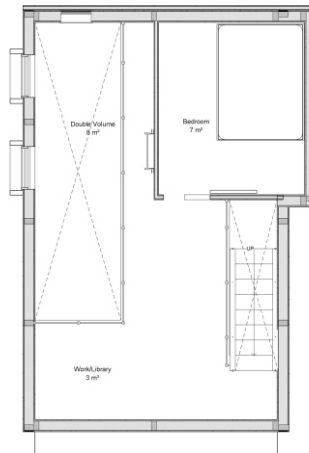
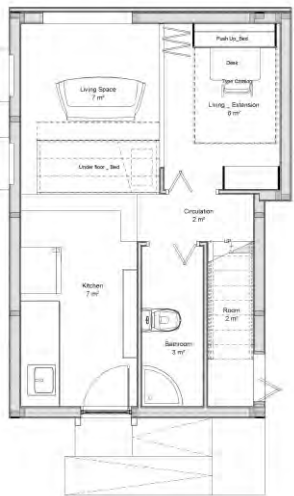
WEST ELEVATION

Tiny House Competition

One of the last projects we worked this year as Broad Based Design was an architectural design competition calling for a tiny house for Volume Zero. We brought the concept home as we felt that the tiny house has been in our contextual DNA in the way of informal settlements, unfortunate as their history may be. We use used Maslow's Hierarchy of needs as the foundation of our concept to create space that caters to a variety on needs in a 27 sqm meter foot print . We hope one day we can find some smart people who can perhaps help us realize this concept in the real world.



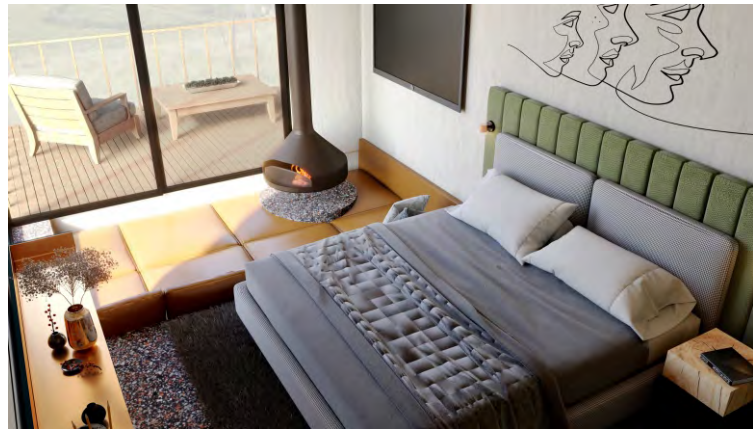
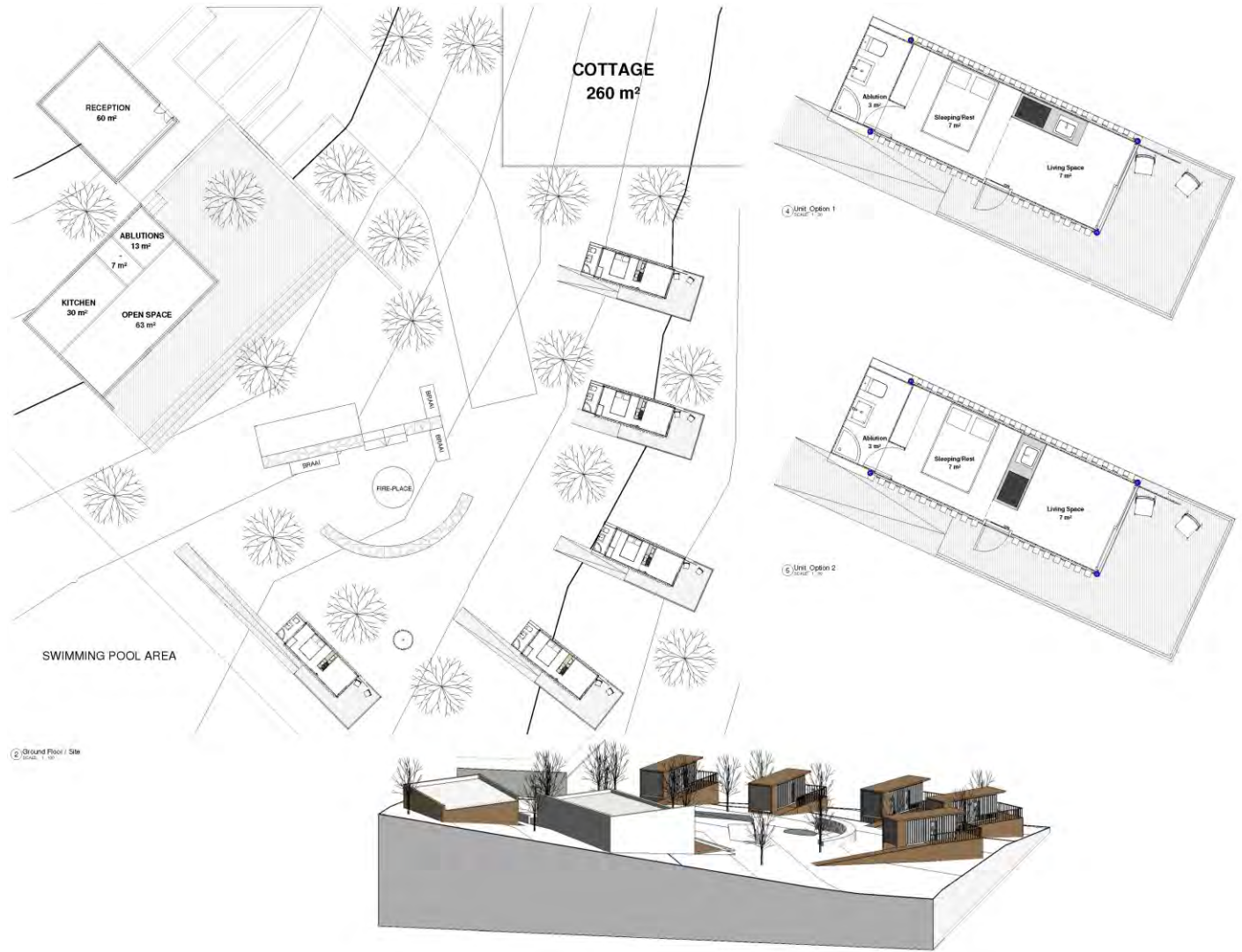
The need for homes have evolved beyond the need for Safety & Physiological needs. However, this primary need can never be neglected.



Dwesa Cottages Retreat

A 3200 sqm site situated in Willowvale a village called Ntubeni. The site has clear views of the sea next to the Dwesa nature reserve.

The client wanted to explore the idea of building retreat cottages in the area to rent to holiday makers. We came up with simple concept of using container structures to be used as cabins and minimize the footprint.



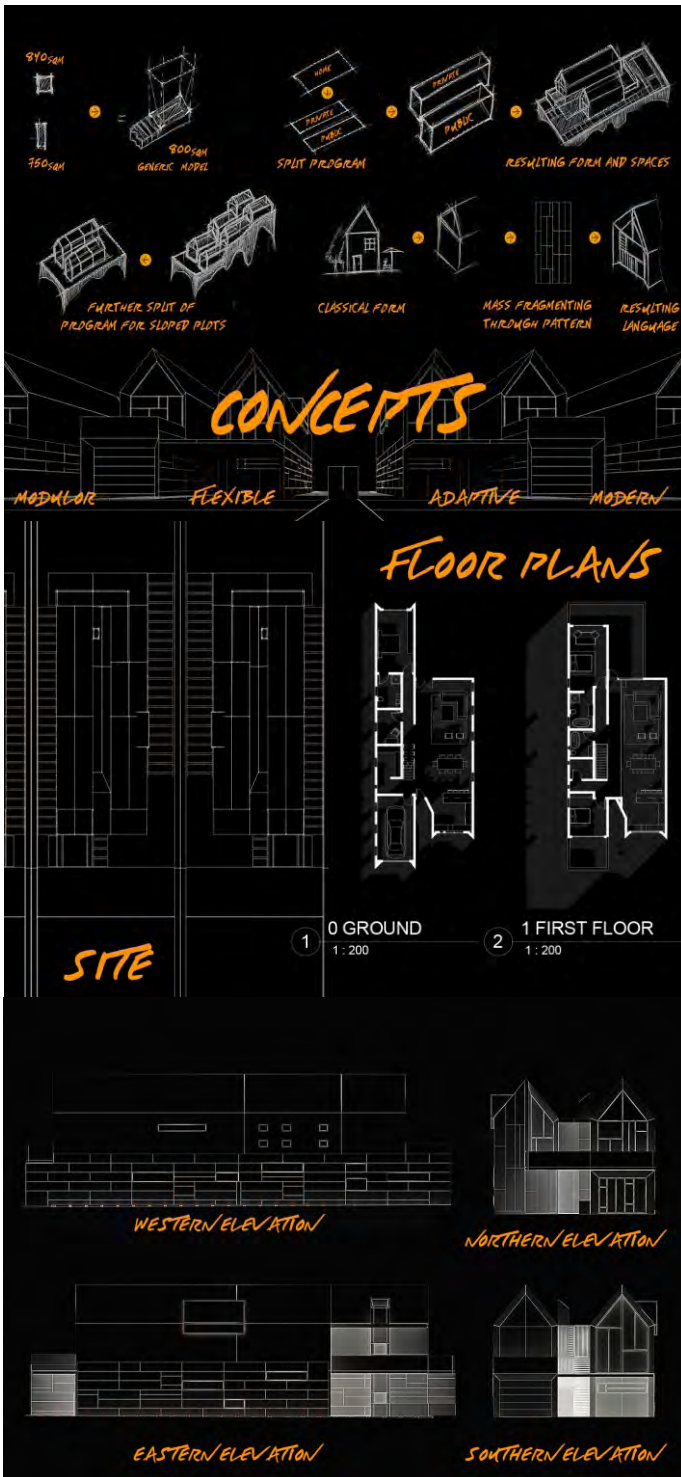
Wilderness Retreat

A Concept for a raw and rugged container get away home in the wilderness. The owner wanted a no fuss kind of look. Take your bakkie and bike go have a retreat and a lekker braai.



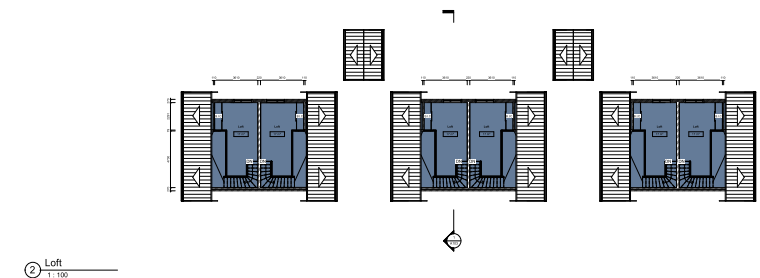
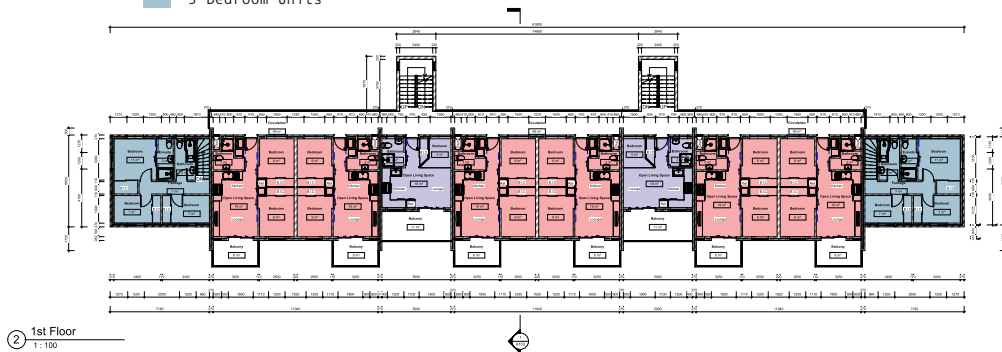
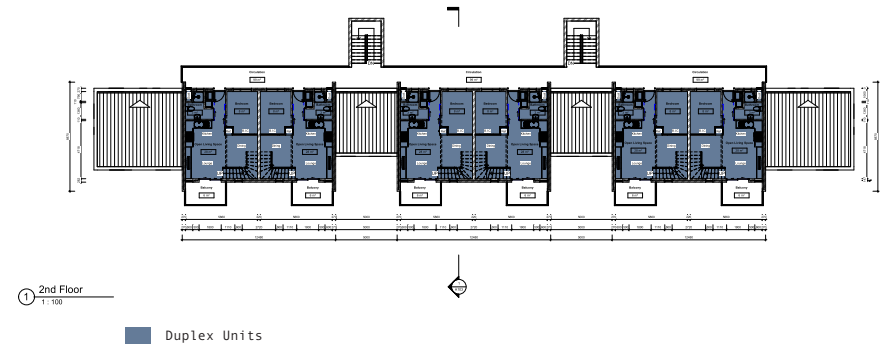
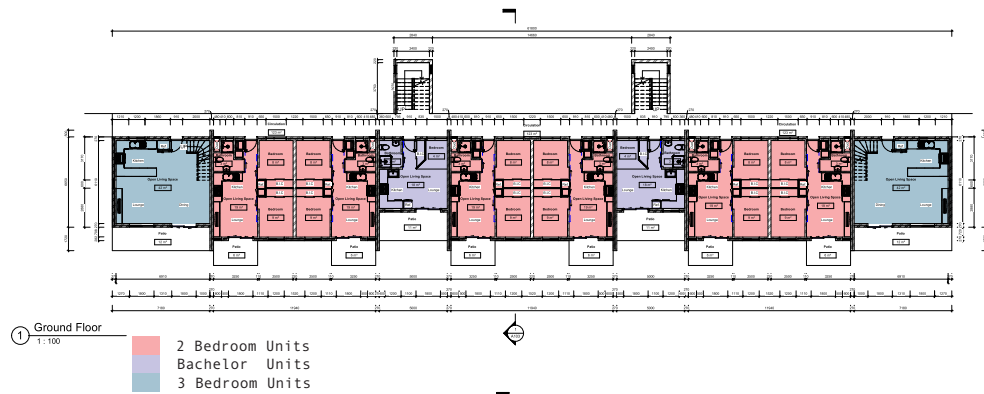
Ziveli Lifestyle Village

A proposal for a lifestyle village in Namibia. We used very geometric shapes to create space and give the project a modern aesthetic.



Algoa Park Social Housing

To address the need of housing in South Africa the department of Human Settlement and Public works have worked to address their need in the National Development plan. Broad Based Design was part of a tender a consortium and they presented the following scheme to bring across housing that is dignified and sustainable to the people. The development is proposed for Algoa Park in Port Elizabeth an area that is underdeveloped but also consisting of a lot of industrial area.



Injongo Primary school - Khayelistsha - Extension

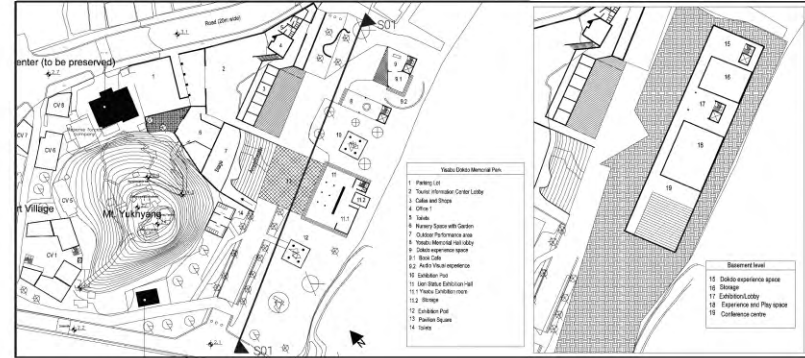
The services of Broad Based Design were called upon for the proposed extension of this primary school in Khayelitsha Cape Town. The school need to add Grade R classes, a library , school hall and new soccer and netball fields.



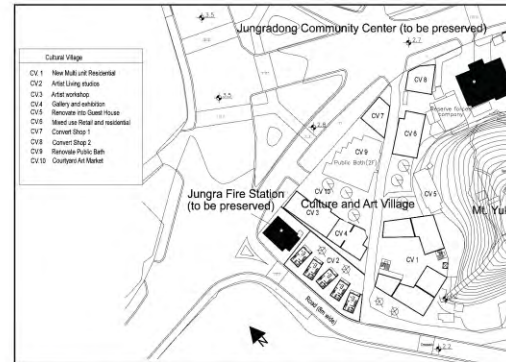
Yisabu Dokdo- Memorial -South Korea

This was international competition we entered to design memorial park in Samcheock city. The park was to commemorate General Yisabu who launched in 512 A.D. his voyage to Usanguk. Which has now become important as part of the evidence showing that Dokdo is the territory of the Republic of Korea.

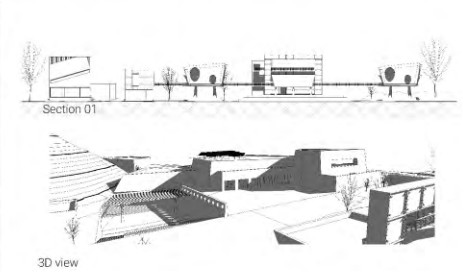
Broad Based Design proposed a series of buildings capturing significant moments in the travels of general Yisabu creating moments in place. The concept also integrated a park space that can be enjoyed by the public when visiting.



Yasaku Dakdo Memorial Park : Plan



Cultural Village: Plan



3D view

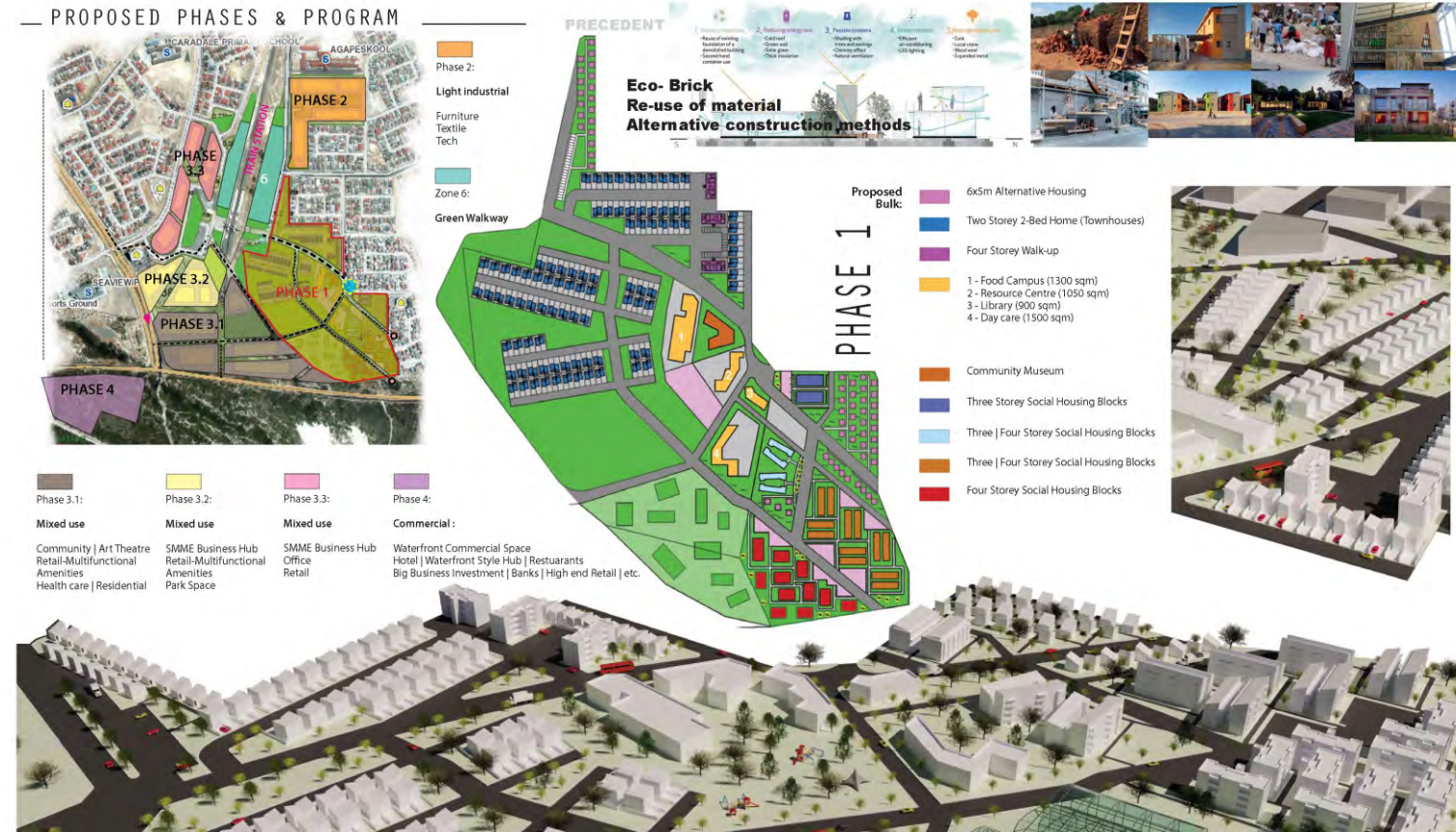


C40 Sustainable Design

Located at the end of the Mitchell's Plain railway line, and next to Mnandi Beach resort on the False Bay coastline, this unique opportunity site is located at the southern end of Mitchell's Plain, a suburb forming part of the greater Cape Flats area in Cape Town.

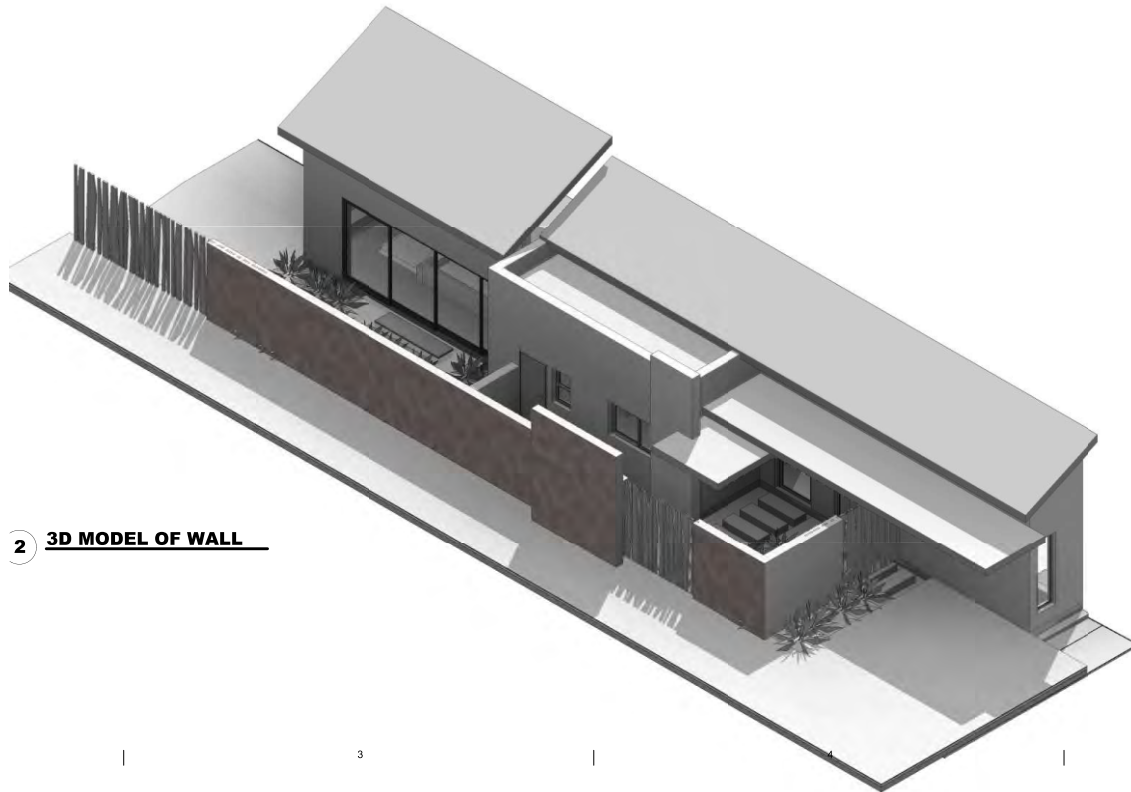
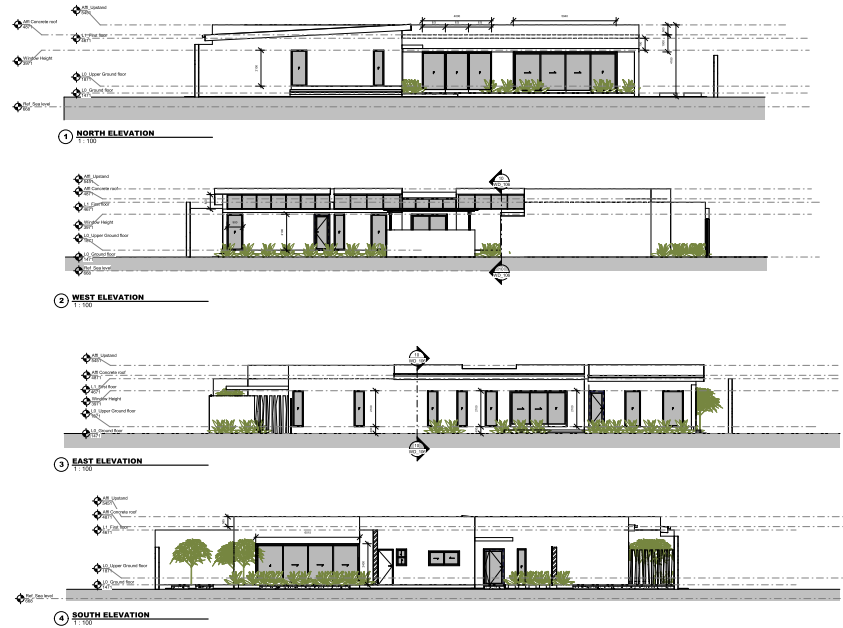
The site comprises a collection of undeveloped land parcels, underutilised and obsolete road and parking infrastructure around Kapteinsklop railway station, some undeveloped open spaces and also naturally vegetated areas. Roughly 25 km south-east of central Cape Town, this locality on the False Bay coastline is earmarked to develop into a new local coastal node of mixed nature and special significance.

C40 Sustainable cities was competition tender by the City of Cape Town. Broad Based Design was part of the development team and where driving the urban master planning and the sustainable design strategies around the concept. The concept was mixed use urban development broken up in into four different phases. There mixed used phases and a Commercial node at the water front edge.



House Dagumi

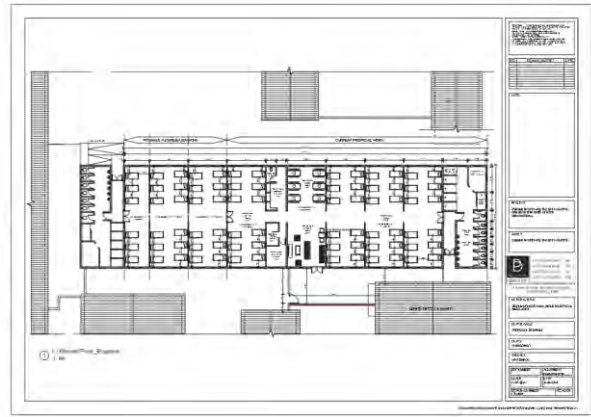
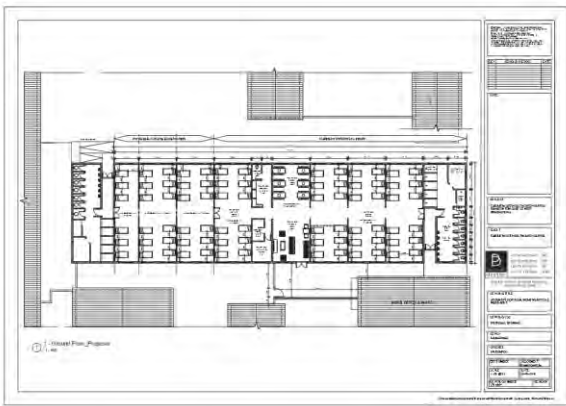
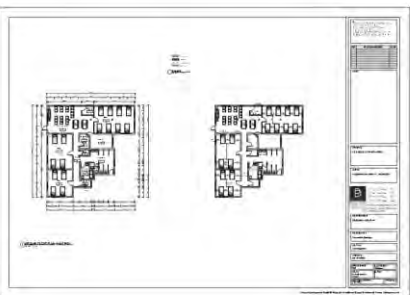
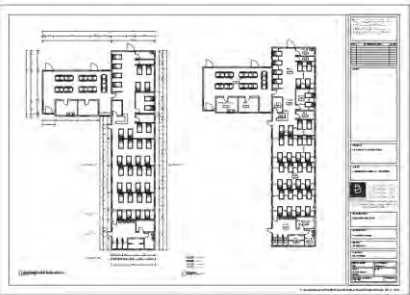
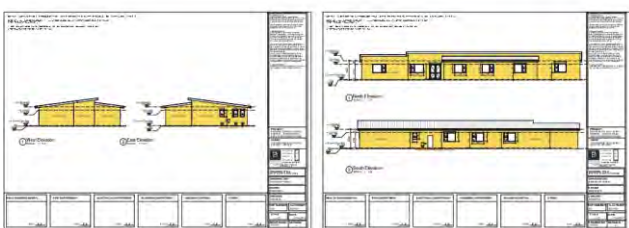
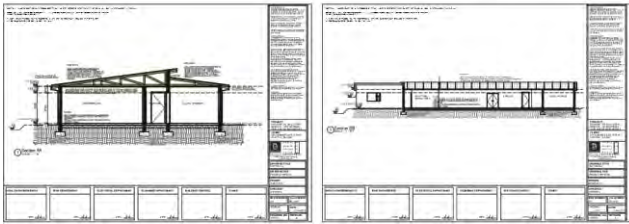
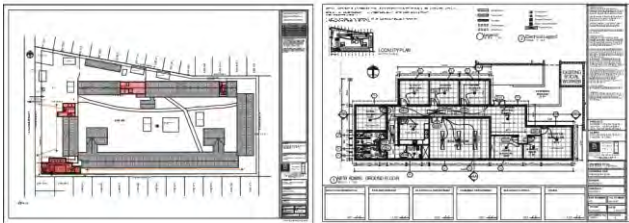
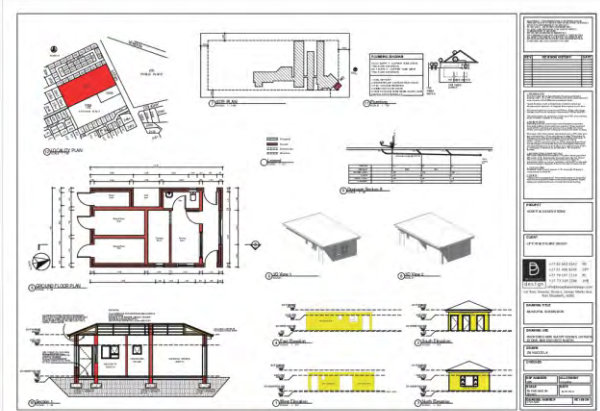
A 3 bedroom family home in Limpopo. The house boasts family lounge, entertainment area and covered terrace



2 3D MODEL OF WALL

Life Healthcare Group

Broad Based Designs first foray into the Healthcare sector was with Life Group. We were tasked with the upgrade and maintenance of their clinics across the country. We worked on their facilities in Kirkwood, Randfontein, Siyathuthuka, Lorrain, Witpoort





info@broadbaseddesign.com
www.broadbaseddesign.com